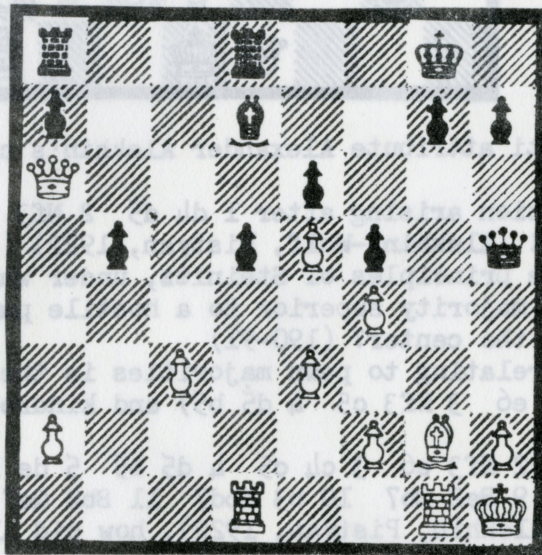
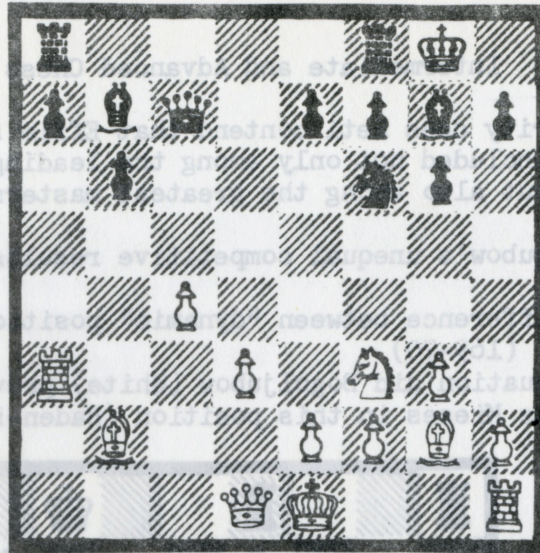


Intermediate and Advanced Chess

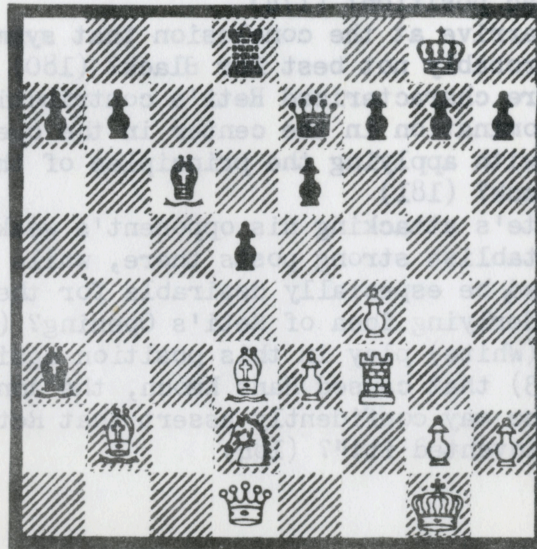
1. On what authority does Reti contend that Effim Bogoljubow "must without doubt be included not only among the leading masters of the present day, but also among the greatest masters in the history of chess"? (169)
2. How are Bogoljubow's unequal competitive results to be explained? (169)
3. What is the difference between "dynamic" position judgment and the "static" view? (169-70)
4. By what continuation did Bogoljubow (White) prove the superiority of his game versus Miseses in this position (Baden-Baden, 1925)? (173-74)



5. How can "luck in chess" be regarded as a consequence of one's method of play? (174)
6. What is the psychologically correct procedure for a player who finds himself in a bad position? (174)
7. How does Reti arrive at the conclusion that symmetrical center pawn defenses are probably not best for Black? (180)
8. What new feature characterized Reti's contribution to the general struggle for domination in the center in the opening? (180-81)
9. What is wrong with applying the principles of the Indian Defense to the Indian Attack? (181)
10. Why should White's attacking his opponent's weak points in the opening in order to establish strong posts there, while leaving his strong points untouched, be especially desirable for the second player? (181)
11. What is the underlying idea of Reti's Opening? (181-82)
12. What did Reti (White) play in this position against Rubinstein (Carlsbad, 1923) that caused Hans Kmoch, the annotator of the game, to comment, "One may confidently assert that Reti did not discover this move, he invented it!"? (184)



13. To what does Reti attribute Alexander Alekhin's championship style? (188-89)
14. Assess the position arising after 1 d4 d5 2 Nf3 c5 3 c4 cd 4 cd Nf6 5 Nd4 a6 6 e4!! (Alekhin--Wolf, Pistyan, 1922). (189-90)
15. According to the principles of Steinitz, under what conditions is a queen side pawn majority superior to a hostile pawn majority on the king side or in the center? (190-91)
16. Upon what idea relating to pawn majorities is the Blumenfeld Gambit (1 d4 Nf6 2 c4 e6 3 Nf3 c5 4 d5 b5) and kindred systems based? (191)
17. After 1 d4 Nf6 2 Nf3 e6 3 c4 c5 4 d5 b5 5 de fe 6 cb d5 7 e3 Bd6 8 Nf3 O-O 9 Be2 Bb7 10 b3 Nbd7 11 Bb2 Qe7 12 O-O Rad8 13 Qc2 (Tarrasch--Alekhin, Pistyan, 1922), how did Alekhin convert his opening advantage into an overwhelming position in the middlegame? (192)
18. White to play and win: analyze the decisive combination in depth (Alekhin--Drewitt, Portsmouth, 1924). (194-95)



19. What "hypermodern" principle does Black follow by surrendering the center after 1 d4 d5 2 Nf3 Nf6 3 c4 c6 4 e3 e6 5 Nc3 Nbd7 6 Qc2 Bd6 7 Bd3 O-O 8 O-O Qe7 9 e4 dc 10 Bc4 e5 11 Rdl ed (Dawidson--Alekhin, Semmering, 1926)? (197-98)
20. How does Reti combat the notion that the art of chess combination is an inborn trait and cannot be acquired by study? (204-08)

Intermediate and Advanced Chess

1. Bogoljubow--Tarrasch, Breslau, 1925: 1 e4 Nf6 2 e5 Nd5 3 Nf3 d6
4 d4 Bf5 5 Bd3 Bg6 6 c4 Nb6 7 Bg6 hg 8 e6 f6 9 Qd3 Qc8 10 Qg6 Kd8
11 Qf7 Nc4 12 Nbd2 Nd2 13 Bd2 g5 14 d5 c5 15 Bc3 g4 16 Nh4 Rh4 17
Qf8 Kc7 18 Qe7 Kb6 19 Qd6 Kb5 20 a4 Kc4 21 Qf4 Kd5 22 0-0-0 Resigns.

2. Flambert--Bogoljubow, Triberg, 1915: 1 e4 e5 2 Nf3 Nc6 3 Bb5 a6
4 Ba4 Nf6 5 d4 Ne4 6 0-0 b5 7 Ne5 Ne5 8 de d5 9 ed Bd6 10 Bb3 Bb7
11 a4 0-0 12 ab Qh4 13 h3 Nf2 14 Rf2 Bc5 15 Qf1 Rae8 16 Bd2 Re5 17
Ra4 Qe7 18 ba Ba6 19 Qa6 Rel 20 Kh2 Bf2 21 Nc3 Qe5 22 Rf4 g5 23 Qb5
gf 24 Bf4 Bg3 25 Bg3 fg 26 Kgl Qe3 27 Kh1 Qel 28 Resigns.

3. Reti--Tartakower, Vienna, 1910: 1 e4 c6 2 d4 d5 3 Nc3 de 4 Ne4
Nf6 5 Qd3 e5 6 de Qa5 7 Bd2 Qe5 8 0-0-0 Ne4 9 Qd8 Kd8 10 Bg5 Kc7
11 Bd8mate.

4. Euwe--Reti, Amsterdam, 1922: 1 e4 e5 2 Nf3 Nc6 3 Bc4 Nf6 4 d4
ed 5 0-0 Ne4 6 Rel d5 7 Bd5 Qd5 8 Nc3 Qa5 9 Nd4 Nd4 10 Qd4 f5 11
Bg5 Qc5 12 Qd8 Kf7 13 Ne4 fe 14 Rad1 Bd6 15 Qh8 Qg5 16 f4 Qh4 17
Re4 Bh3 18 Qa8 Bc5 19 Kh1 Bg2 20 Kg2 Qg4 21 Resigns.

5. Reti--Euwe, Rotterdam, 1920: 1 d4 f5 2 e4 fe 3 Nc3 Nf6 4 Bg5
g6 5 f3 ef 6 Nf3 Bg7 7 Bd3 c5 8 d5 Qb6 9 Qd2 Qb2 10 Rb1 Nd5 11 Nd5
Qb1 12 Kf2 Qh1 13 Be7 d6 14 Bd6 Nc6 15 Bb5 Bd7 16 Bc6 bc 17 Qe2
Resigns.

6. Bogoljubow--Reti, Maehrisch-Ostrau, 1923: 1 e4 e6 2 d4 d5 3 Nc3
Nf6 4 e5 Nfd7 5 Qg4 c5 6 Nb5 cd 7 Nf3 Nc6 8 Nd6 Bd6 9 Qg7 Be5 10
Ne5 Qf6 11 Qf6 Nf6 12 Bb5 Bd7 13 Nf3 Ne4 14 0-0 f6 15 Bc6 bc 16 Nd4
c5 17 Ne2 Kf7 18 f3 Nd6 19 b3 e5 20 Ba3 Rac8 21 Rad1 d4 22 Ncl Nf5
23 Rf2 Ne3 24 Rel c4 25 b4 Ba4 26 Ree2 Nd1 27 Rf1 Nc3 28 Ref2 Nbl
29 Bb2 c3 30 Nb3 Bb3 31 ab Nd2 32 Rel Rhd8 33 Bel d3 34 cd Rd3 35
Bd2 Rd2 36 Ral Ke6 37 Kf1 Rf2 38 Kf2 c2 39 Rcl Kd5 40 Ke3 Rc3 41
Kd2 Kd4 42 h4 Rd3 43 Resigns.

7. Alekhin--Reti, Vienna, 1922: 1 e4 e5 2 Nf3 Nc6 3 Bb5 a6 4 Ba4
Nf6 5 Nc3 b5 6 Bb3 Bc5 7 Ne5 Ne5 8 d4 Bd6 9 de Be5 10 f4 Bc3 11 bc
0-0 12 e5 c5 13 Ba3 Qa5 14 0-0 Qa3 15 ef c4 16 Qd5 Qa5 17 fg Qb6
18 Kh1 Kg7 19 Bc4 Bb7 20 Qe5 Qf6 21 Bd3 Rfe8 22 Qh5 h6 23 Qg4 Kh8
24 Qd7 Re7 25 Qd4 Qd4 26 cd Rd8 27 f5 f6 28 Rael Rg7 29 Be4 Rd4 30
Bb7 Rb7 31 Re6 Kg7 32 Ra6 Rc4 33 Rf3 Rc2 34 h3 Kf7 35 Rg3 Rf2 36
Rg6 Rf5 37 Rh6 Kg7 38 Rh4 b4 39 Rg4 Kf7 40 Rg3 Rfb5 41 Rb3 Kg6 42
Kh2 Rc5 43 Ra4 Rcb5 44 h4 R5b6 45 Kh3 Rb8 46 g3 f5 47 Ra5 Rc8 48
Rf3 Rf6 49 Kg2 Rc3 50 Ra8 Rf3 51 Kf3 Rc6 52 Rb8 Rc4 53 Rb6 Kg7 54
h5 Rd4 55 Rc6 Re4 56 Rg6 Kf7 57 g4 Rg4 58 Rg4 fg 59 Kg4 Kg7 60
Drawn.

8. Alekhin--Grigoriev(?), Moscow, 1915: 1 e4 e6 2 d4 d5 3 Nc3 Nf6
4 Bg5 Bb4 5 e5 h6 6 ef hg 7 fg Rg8 8 h4 gh 9 Qg4 Be7 10 g3 c5 11
gh cd 12 h5 dc 13 h6 cb 14 Rbl Qa5 15 Ke2 Qa2 16 h7 Qb1 17 hg Q Kd7
18 Qf7 Qc2 19 Kf3 Nc6 20 Qge6 Kc7 21 Qf4 Kb6 22 Qee3 Bc5 23 g8 Q bl Q
24 Rh6 Be3 25 Qd8 Kc5 26 Qd5 Kd5 27 Qd6mate.

9. Alekhin--Levenfisch, St. Petersburg, 1912: 1 d4 c5 2 d5 Nf6 3 Nc3 d6 4 e4 g6 5 f4 Nbd7 6 Nf3 a6 7 e5 de 8 fe Ng4 9 e6 Nde5 10 Bf4 Nf3 11 gf Nf6 12 Bc4 fe 13 de Qb6 14 Qe2 Qb2 15 Nb5 Qa1 16 Kf2 Qh1 17 Nc7 Kd8 18 Qd2 Bd7 19 ed Resigns.

10. Verlinsky--Alekhin, St. Petersburg, 1909: 1 e4 e5 2 Nf3 Nc6 3 Bb5 a6 4 Bc6 dc 5 d4 ed 6 Qd4 Qd4 7 Nd4 c5 8 Ne2 Bd7 9 b3 c4 10 bc Ba4 11 c3 0-0-0 12 Nd2 Bc2 13 f3 Bc5 14 a4 Nf6 15 Ba3 Be3 16 Nf1 Ba7 17 a5 Rd3 18 c5 Rhd8 19 Kf2 Nd7 20 Ne3 Nc5 21 Nd4 Bb3 22 Ke2 Rc3 23 Bb2 Re3 24 Ke3 Ne6 25 Ra3 Nd4 26 Kf4 Bc5 27 Rhal Ne2 28 Kg4 Be6 29 Resigns.

11. Alekhin--Marshall, Baden-Baden, 1925: 1 d4 d5 2 c4 Nf6 3 cd Nd5 4 e4 Nf6 5 Bd3 e5 6 de Ng4 7 Nf3 Nc6 8 Bg5 Be7 9 Be7 Qe7 10 Nc3 Nce5 11 Ne5 Qe5 12 h3 Nf6 13 Qd2 Bd7 14 Qe3 Bc6 15 0-0-0 0-0 16 f4 Qe6 17 e5 Rfe8 18 Rhel Rad8 19 f5 Qe7 20 Qg5 Nd5 21 f6 Qf8 22 Bc4 Nc3 23 Rd8 Rd8 24 fg Na2 25 Kbl Qe8 26 e6 Be4 27 Kal f5 28 e7 Rd5 29 Qf6 Qf7 30 e8Q Resigns.

12. Alekhin--Marshall, New York, 1927: 1 d4 Nf6 2 c4 e6 3 Nf3 Ne4 4 Nfd2 Bb4 5 Qc2 d5 6 Nc3 f5 7 Nde4 fe 8 Bf4 0-0 9 e3 c6 10 Be2 Nd7 11 a3 Be7 12 0-0 Bg5 13 f3 Bf4 14 ef Rf4 15 fe Rf1 16 Rf1 e5 17 Qd2 c5 18 de d4 19 Qf4 dc 20 Qf7 Kh8 21 bc Qg8 22 Qe7 h6 23 Bh5 a5 24 e6 g6 25 ed Bd7 26 Rf7 Resigns.

13. Alekhin--Podgorny, Prague, 1942: 1 e4 c5 2 c3 d5 3 ed Qd5 4 d4 Nc6 5 Nf3 Bg4 6 Be2 cd 7 cd e6 8 Nc3 Bb4 9 0-0 Qa5 10 a3 Nf6 11 d5 ed 12 ab Qa1 13 Nd2 Be2 14 Qe2 Ne7 15 Rel 0-0 16 Nb3 Qa6 17 Qa6 ba 18 Re7 Rab8 19 b5 ab 20 Ra7 b4 21 Ne2 Rfc8 22 f3 Ra8 23 Ra8 Ra8 24 Kf2 Nd7 25 Nf4 Nb6 26 Ke3 Rc8 27 Kd3 g5 28 Nh5 Resigns.

14. Rodzynski--Alekhin, Paris, 1913: 1 e4 e5 2 Nf3 Nc6 3 Bc4 d6 4 c3 Bg4 5 Qb3 Qd7 6 Ng5 Nh6 7 Bf7 Nf7 8 Nf7 Qf7 9 Qb7 Kd7 10 Qa8 Qc4 11 f3 Bf3 12 gf Nd4 13 d3 Qd3 14 cd Be7 15 Qh8 Bh4mate.

15. Torres--Alekhin, Seville, 1922: 1 e4 e5 2 Nf3 Nc6 3 Bb5 a6 4 Ba4 Nf6 5 0-0 d6 6 Bc6 bc 7 d4 Ne4 8 Rf1 f5 9 de d5 10 Nd4 Bc5 11 c3 0-0 12 f4 Qe8 13 Be3 Bb6 14 Nd2 Bb7 15 N2f3 Rd8 16 Qc2 c5 17 Nb3 c4 18 Nbd4 c5 19 Ne2 Qc6 20 Rad1 h6 21 Ref1 Kh8 22 Kh1 Qg6 23 Neg1 Qh5 24 Nh3 d4 25 cd cd 26 Bd4 Bd4 27 Rd4 Rd4 28 Nd4 Qh3 29 gh Nf2 30 Kgl Nh3mate.

16. Alekhin--Forrester, Glasgow, 1923: 1 e4 e5 2 Nf3 Nc6 3 Bb5 a6 4 Ba4 Nf6 5 Nc3 Bc5 6 Ne5 Ne5 7 d4 Bb4 8 de Ne4 9 Qd4 Nc3 10 bc Ba5 11 Ba3 b6 12 e6 Qf6 13 Bd7 Kd8 14 Bc6 Qd4 15 e7mate.

17. Alekhin--Poindle, Vienna, 1936: 1 e4 e5 2 Nf3 Nc6 3 Bb5 Nf6 4 0-0 Ne4 5 d4 Nd6 6 de Nb5 7 a4 Nd6 8 ed Bd6 9 Ng5 Be7 10 Qh5 g6 11 Qh6 Bf8 12 Rel Ne7 13 Ne4 f5 14 Nf6 Kf7 15 Qh4 Bg7 16 Bg5 h6 17 Qc4 Kf8 18 Re7 Qe7 19 Nh7 Rh7 20 Be7 Ke7 21 Qc7 Bb2 22 Ra2 Bf6 23 c4 Kf7 24 Re2 Rh8 25 Qd6 a5 26 Nc3 Ra6 27 Qd5 Kg7 28 Nb5 Re6 29 Nd6 Rd8 30 Kf1 Resigns.

18. Alekhin--Asgierssen, Iceland, 1931: 1 e4 e6 2 d4 d5 3 Nc3 Nf6 4 Bg5 Be7 5 Bf6 Bf6 6 Nf3 0-0 7 Bd3 Re8 8 e5 Be7 9 h4 c5 10 Bh7 Kh7 11 Ng5 Bg5 12 hg Kg8 13 Qh5 Kf8 14 0-0-0 a6 15 g6 Ke7 16 gf Rf8 17 dc Nd7 18 Rd5 Qa5 19 Qg5 Kf7 20 Rh7 Rg8 21 Rd4 Qc5 22 Rd7 Bd7 23 Ne4 Qb4 24 Nd6 Kf8 25 Qf6 gf 26 Rf7mate.